



Total Solution Provider in Saw Device

SA243BP

PHS, IF SAW Filter

Revision 0: January 2006



- Electrical Characteristics
 - Package Dimensions
 - Testing Environment
 - Frequency Characteristics
-

SAWNICS Inc.

460 Cheonheung-ri, Seonggeo-eup, Cheonan-si, Chungcheongnam-do, 330-836 / Korea.
Tel: +82 41 550 9372 / Fax: +82 41 550 9399 / www.sawnics.com

□ Electrical Characteristics

Maximum Ratings

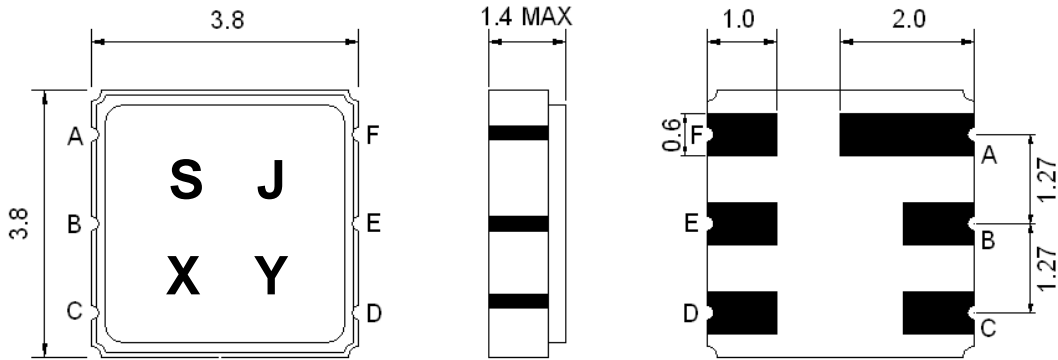
Parameters Description	Unit	Minimum	Typical	Maximum
Operating Temperature Range	°C	-10	-	+60
Storage Temperature Range	°C	-40	-	+85
Maximum DC Voltage	V	-	-	0
Maximum Input Power	dBm	-	-	10
Source Impedance (single ended) ⁽¹⁾	Ω	-	50	-
Load Impedance (single ended) ⁽¹⁾	Ω	-	50	-
Package type & size	P			
Length x Width	mm ²	-	3.8 x 3.8	-
Height	mm	-	-	1.4

Electrical Specification

Parameters Description	Unit	Minimum	Typical	Maximum
Center Frequency (Fo)	MHz	-	243.95	-
Insertion Loss at Fo	dB	-	3.2	4.0
Amplitude Ripple within Fo±100 KHz	dB	-	0.9	1.5
Group Delay Ripple within Fo±100 KHz	μsec	-	-	1.2
Attenuation:				
Fo – 23 MHz	dB	55	61	-
Fo - 1.2 MHz	dB	40	54	-
Fo – 600 KHz	dB	30	37	-
Fo + 600 KHz	dB	30	40	-
Fo + 1.2 MHz	dB	40	46	-
Fo + 23 MHz	dB	55	57	-

Notes : (1) With matching network(Ref. Testing Environment Circuit as shown below)

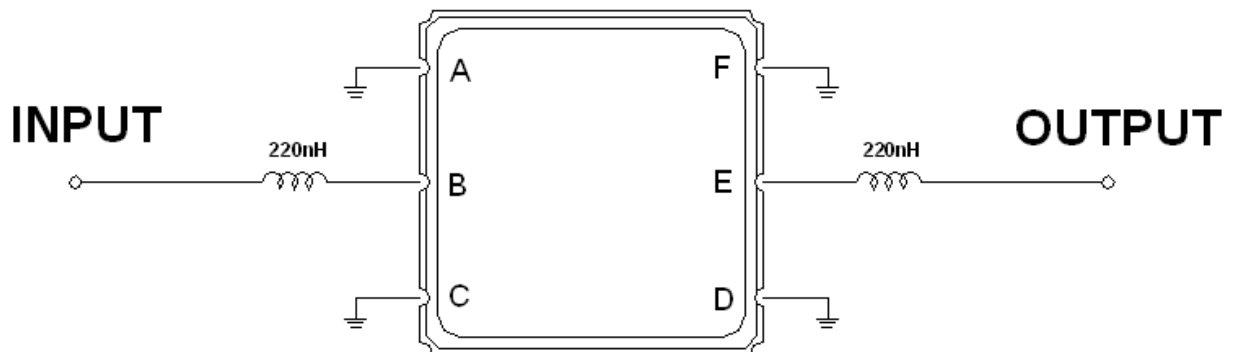
Package Dimensions



Marking Descriptions	
S	TCRF Application
J	Series Number
X	Date Code(Year)
Y	Date Code(Month)

Pin Description	
A, C, D, F	Ground
B	In
E	Out

Testing Environment



Source & Load Impedance: 50 Ω

□ Frequency Characteristics

Frequency Response

